

WESTERN HEALTH

Education & Learning

2021 GRADUATE NURSE PROGRAM

Get the best start!



Western Health



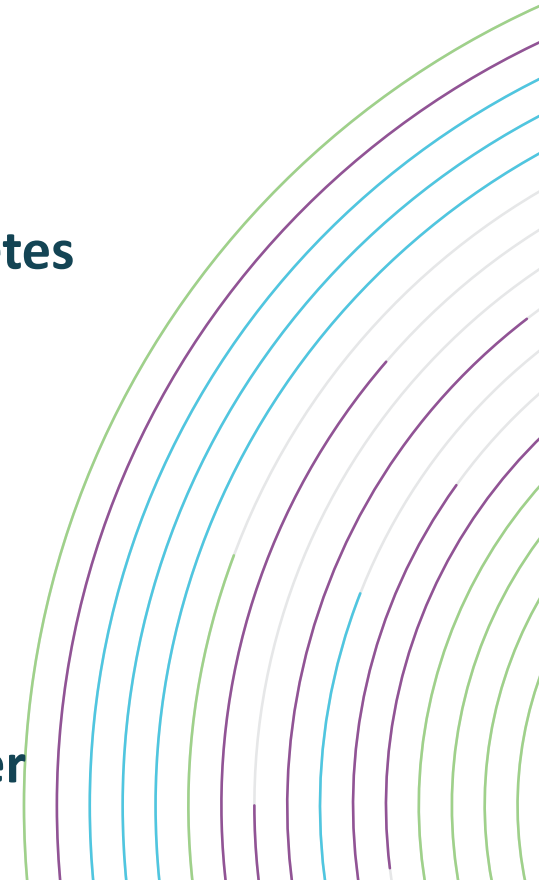
Western Health

- Western Health manages three acute hospitals:
 - Footscray Hospital
 - Sunshine Hospital
 - Williamstown Hospital
-
- We also operate:
 - Sunbury Day Hospital
 - Transition Care Program at Hazeldean, Williamstown
 - A wide range of community based services are also managed by Western Health, along with a large Drug and Alcohol Service



Our Community

- Is growing at an unprecedented rate
- Is among the fastest growth corridors in Australia
- Covers a total catchment area of 1,569 square kilometres
- Has a population of more than 800,000 people
- Has high levels of cancer, heart disease, stroke and mental illness, with diabetes and depression also significant population health issues
- Has a diverse social and economic status
- Is one of the most culturally diverse communities in the state
- Speaks more than 100 different languages/dialects
- Provides a significant number of our staff
- Has a strong history of working collaboratively with Western Health to deliver excellence in patient care



OUR VISIONS

TOGETHER, CARING FOR THE WEST OUR PATIENTS, STAFF, COMMUNITY AND ENVIRONMENT

OUR PURPOSE

LEADING THE DELIVERY OF A CONNECTED AND CONSISTENT PATIENT EXPERIENCE AND PROVIDING THE BEST CARE TO SAVE AND IMPROVE THE LIVES OF THOSE IN OUR COMMUNITY MOST IN NEED.

OUR VALUES

Compassion – consistently acting with empathy and integrity.

Accountability – taking responsibility for our decisions and actions.

Respect – for the rights, beliefs and choice of every individual.

Excellence – inspiring and motivating innovation and achievement.

Safety – prioritising safety as an essential part of everyday practice.

Sunshine Hospital

- An acute teaching hospital
- 600+ beds including mental health beds managed by NorthWest
- Comprehensive range of services across the breadth of the divisions
- New Critical Care Services
- Busy Emergency Department incorporating paediatric services



Joan Kirner Women's and Children's

- Joan Kirner Women's and Children's at Sunshine now provides:
- 237 beds
- 37 Special Care Nursery cots
- 4 Theatres
- Additional clinics



Footscray Hospital

- Acute teaching hospital
- 360+ beds
- Acute elective and acute emergency
- Services for Western Health
- Covers breadth of services across Medical, Surgical, and Subacute divisions
- Critical Care Services



The New Footscray Hospital

- The Andrews Government announced in the latest budget a commitment to rebuild Footscray Hospital
- The site has been selected and building will commence in 2020
- This will be a 504 bed service



Williamstown Hospital

- 90 beds
- Emergency Department
- Covers breadth of services across Surgical, Medical and Subacute divisions
- Recently constructed 4th theatre
- Celebrated 120 year anniversary



Sunbury Day Hospital

- The Sunbury Day Hospital has been treating patients for more than two years. It provides day medical, day surgical, day chemotherapy and haemodialysis treatment
- Provides a number of specialist clinics
- Currently graduate nurses do not rotate to Sunbury



Training Facilities at Western Health

- Western Centre for Health, Research and Education at Sunshine
- There are also simulation rooms at Footscray and Williamstown Hospitals



Western Health



Graduate Nurse Program

AIM

The aim of this program is to develop graduate nurses that are resilient, reflective practitioners who are learning clinical reasoning skills and can demonstrate the safe care of patients.

LEARNING OUTCOMES

By the completion of this program you should be able to:

- Reflect on your practice and strive towards constant improvement
- Demonstrate resilience in your working life and have developed strategies to deal with difficult situations
- Effectively plan care for the day and seek help at appropriate times
- Demonstrate the ability to perform all the clinical skills you have learnt during the program
- Demonstrate the ability, at a beginning level, to utilise clinical reasoning in your daily practice.



Graduate Nurse Program

OVERVIEW:

- 100-120 positions to offer in 2021 working across our sites
- x2 Intakes – February and May
- Permanent employment contract
- 0.8 FTE
- 64 hours / fortnight
- 4 days per week
- Rotating seven day roster
- Five weeks annual leave as per EBA



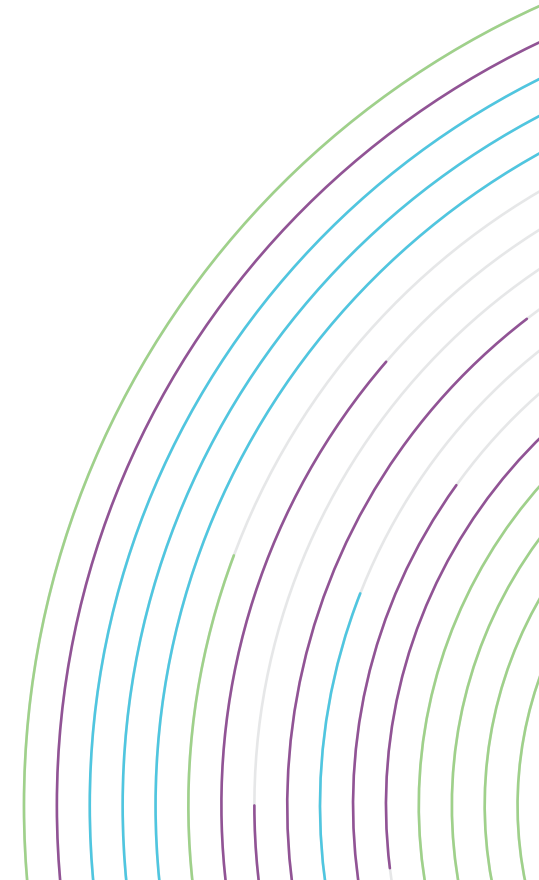
Western Health



Graduate Nurse Program

OVERVIEW:

- **2 x 6 month rotations – a breadth of exposure to a variety of clinical environments**
- **Six day Induction Program at commencement of program including 1 hospital orientation day, 1 graduate specific study day and 4 supernumerary days**
- **Two supernumerary days (minimum) at change of rotation**
- **Two further graduate specific study days**
- **One professional development day in a clinical area of your choice**
- **One professional development day shadowing an ANUM**
- **Monthly debriefing sessions**
- **Regular graduate specific education sessions weekly for first two months and then monthly**
- **Graduate Clinical Workbook to guide your experience**
- **A project each rotation**

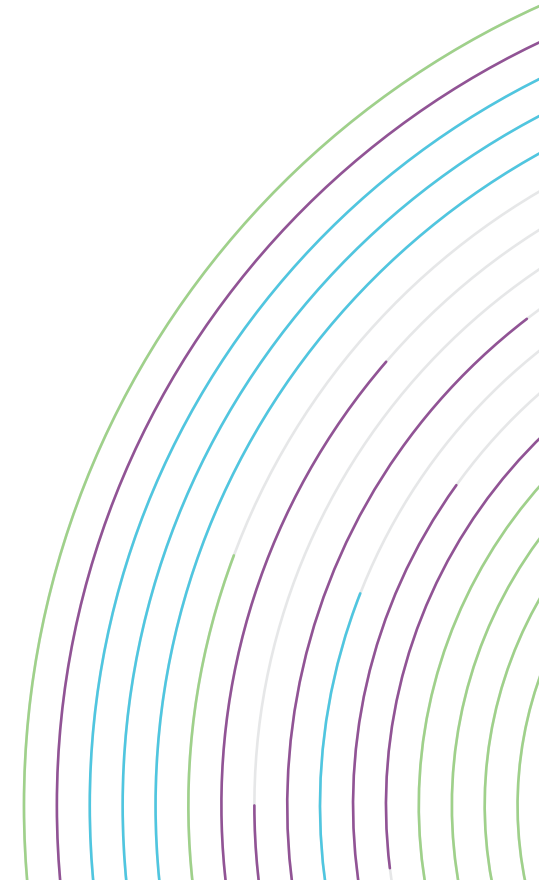


Graduate Support

- Preceptors
- Senior Nursing Staff
- Ward Based Educators
- Speciality Stream Educators
- Nurse Unit Managers
- Education Site Managers
- Graduate Nurse Program Coordinator



Western Health





Clinical Rotations

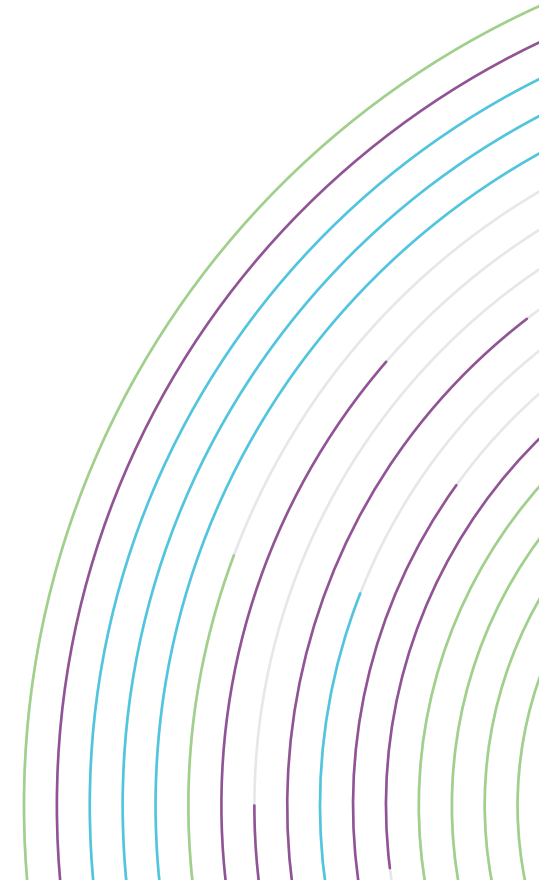
- Colorectal
- Emergency
- Thoracics
- Urology
- Radiology
- Vascular
- Oncology
- Palliative Care
- Theatre
- Drug Health Services
- Medical
- Orthopaedics
- Rehabilitation
- Hazeldean
- Plastics
- Respiratory
- Day Procedure Unit
- Neurology
- Paediatrics
- Special Care Nursery
- Surgical

If you are successful in your application for a graduate year at Western Health we will send you a preference form to fill in. We aim to give you one rotation that is in your top 5 preferences, usually it is in your top 3.



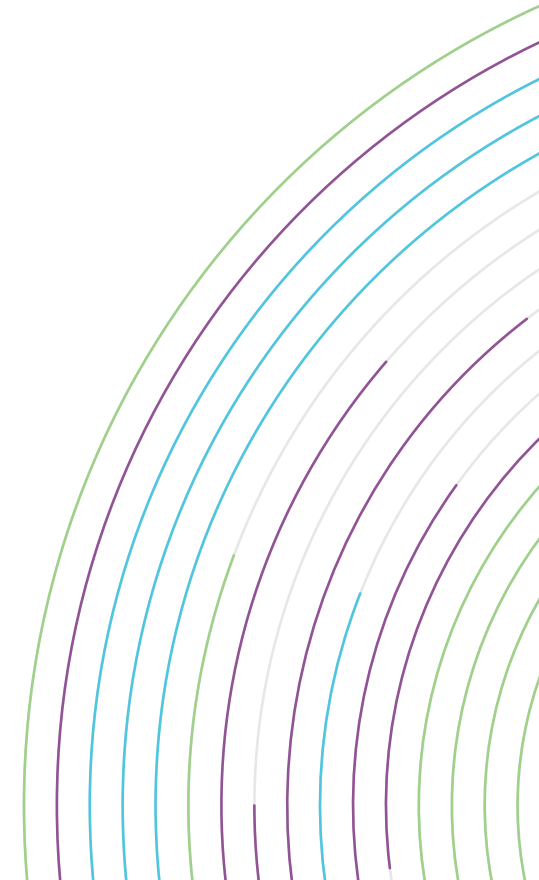
Unique opportunities @ Western Health

- **MeRGE Program** – an opportunity to work in regional Victoria
- **CoHealth “Healthworks”** – an opportunity to work in a primary health service for people who inject drugs



Why choose Western Health?

- We service a culturally diverse population of over 800,000 people, from various backgrounds, who speak more than 100 different languages/dialects
- We are actively engaged in our community
- We are an employer of choice in the West
- We care about and invest in providing a Positive Workplace for all staff and volunteers
- Environmental Sustainability is high on our agenda
- Aboriginal Employment Plan
- We are a Registered Training Organisation and provide our staff with an opportunity to complete accredited training onsite



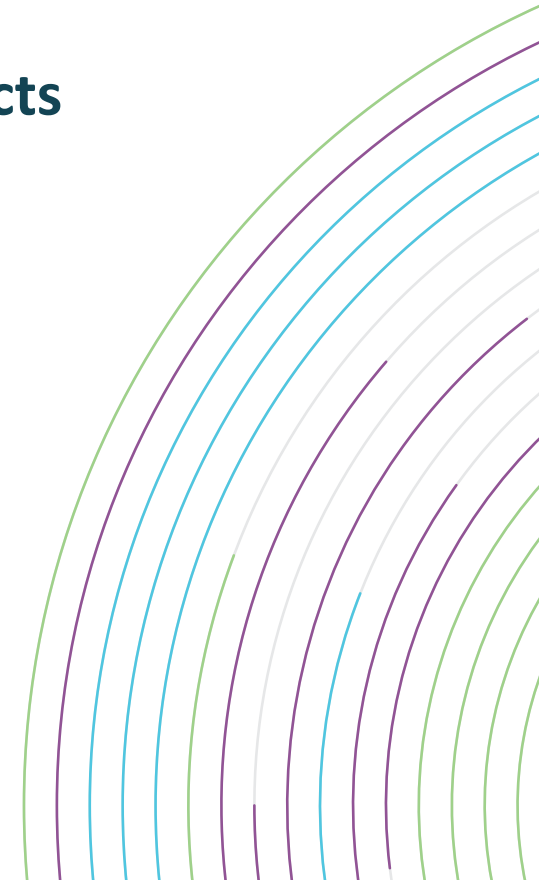


Western Health

EDUCATION & LEARNING

After my Graduate Year

- >90% of graduates remain with Western Health after completing their graduate nurse program
- All graduate nurses are provided with permanent employment contracts
- Multiple opportunities for employment at Western Health
- Vacancies within general areas
- Vacancies within Nursing and Midwifery Workforce Unit (NMWU)
 - Nurse Pool (contracted)
 - Nurse Bank (casual)
- Discovery Programs across a wide range of clinical areas



Ongoing Career Development

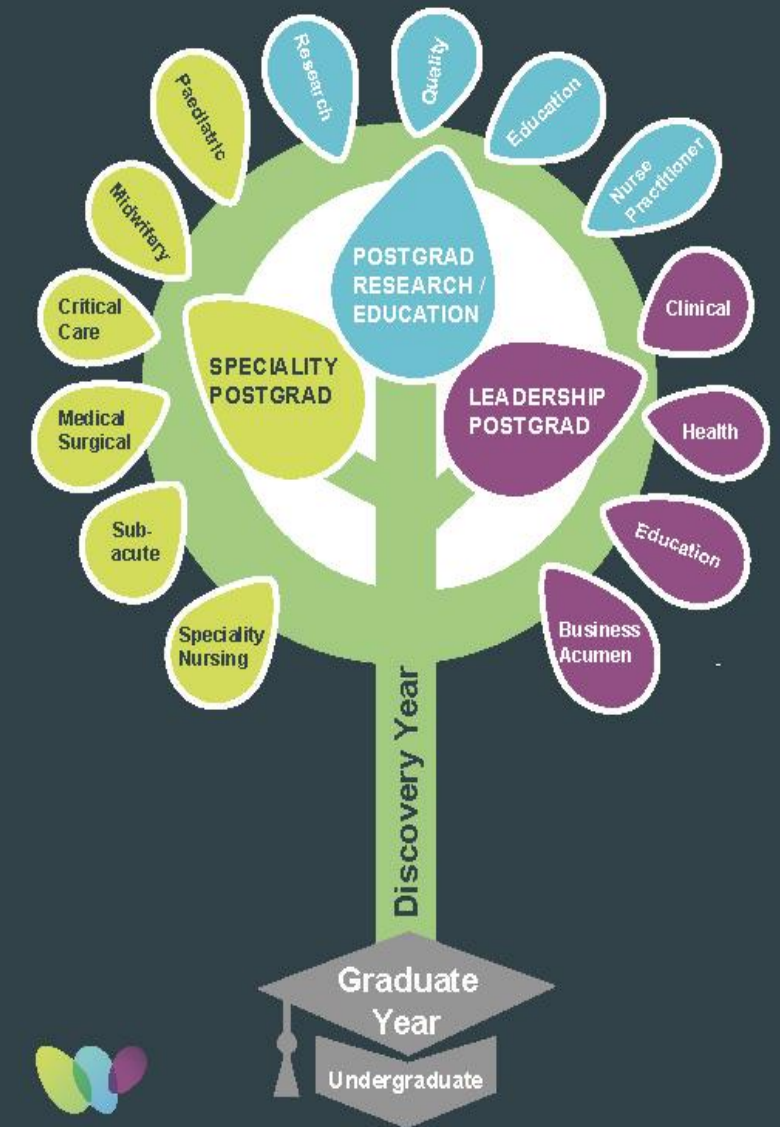
Ongoing Professional Development

- Range of courses and in-services delivered by internal and external experts
- Research Week/Best Care Forum
- Leadership Pathway Program

Post Graduate Studies

- Strong partnerships with tertiary institutions
- Units of study delivered on-site by our own staff
- Scholarships available to assist with financial cost of studying
- Research partnership with Victoria University and Deakin

Traject-Tree





Western Health

EDUCATION & LEARNING

Application Process

- Applications open Monday 13th July and close Wednesday 5th August
- Cover Letter (no longer than one page)
- CV including all undergraduate clinical placements
- Certified transcript of all results (Key included)
- Complete copies of two recent clinical nursing student assessments one of which must be an acute placement
- References will be managed by PMCV
- Recent passport sized photograph

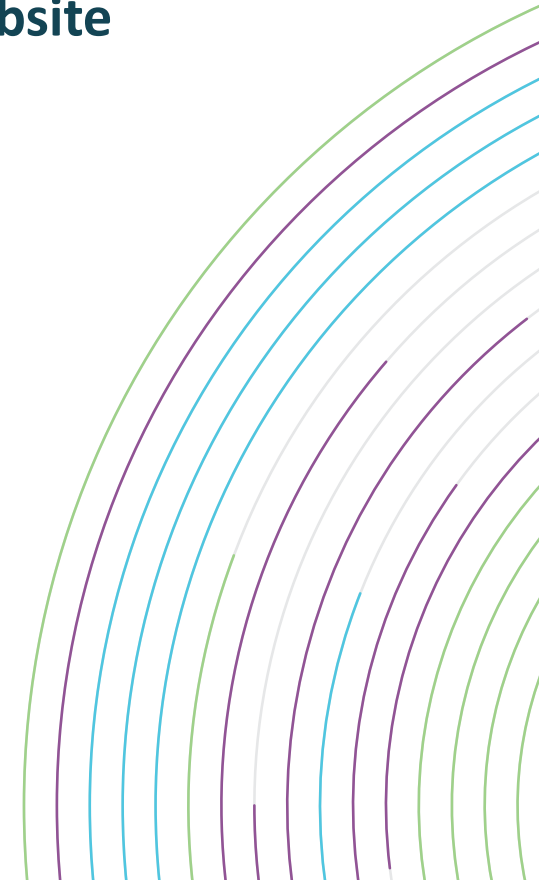
For further information about our application process visit GNP 'Application Process' at our website:

www.westernhealth.org.au



Interviews

- Different process this year – refer to the GNP ‘Application Process’ at our website
- You will be informed of the process when it has been finalised
- This process will be administered by PMCV and involve an online interview



Contact Details

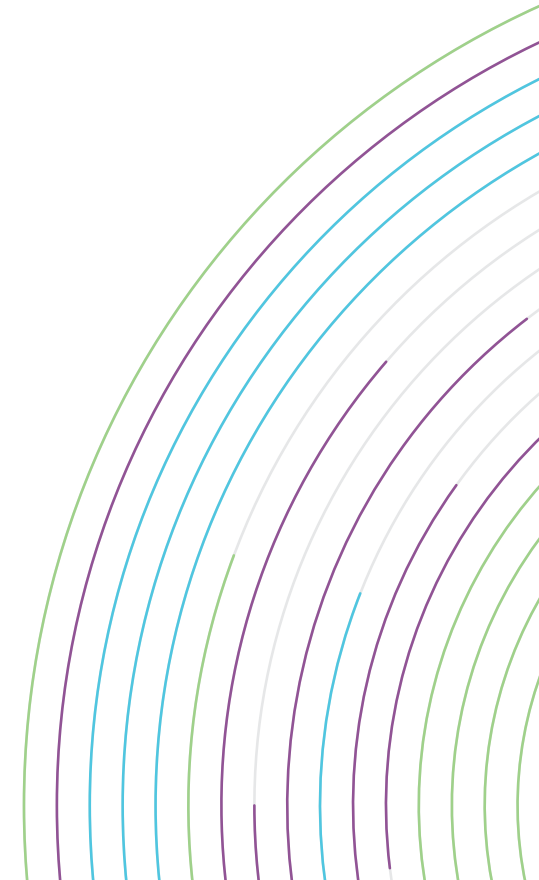
Graduate Nurse Program Coordinator

Robyn Peel

GraduateNurses@wh.org.au

www.westernhealth.org.au

Please contact me with any questions via this email address



When will I know?

- **Successful applicants notified via PMCV website**
- **Monday 19th October 2020**
(Approximately: 10.00am)
- **If you are successful Western Health will contact you on that day as well**

