



WESTERN HEALTH

Education & Learning

**Graduate Midwife/Combined Program
and Bridging Program 2024**



Western Health

ACKNOWLEDGEMENT OF COUNTRY

Western Health acknowledges the Wurundjeri Woi-Wurrung, Boon Wurrung and Bunurong peoples of the Kulin Nation, and the traditional custodians of the lands on which all Western Health sites stand.

We pay our respects to Elders past, present and future.



Why Western Health?



<https://www.youtube.com/watch?v=DuuUg49jyKc>

Joan Kirner Women's & Children's at Sunshine Hospital

Clinical Scope - Tertiary Hospital 6,500 births in last 12 months

Women's & Children's Outpatient Services, including EPAS & MFM

Maternity Assessment Centre: 23 bed assessment unit for inpatient and outpatient attendance

Birthing Suite: 20 Labour & birth rooms, 2 high care unit beds, and 1 bereavement room

32 Children's inpatient Beds

Newborn Services: 6 NICU cots, 24 Level 3-5 cots (HDU/SCN)

64 Women's Inpatient Beds

4 Operating Theatres



Maternity Services

Joan Kirner Women's & Children's, Sunshine Hospital

What Joan Kirner has to offer

- > 6,500 births in the past 12 months
- 50,000 Gynae and Obstetric outpatient appointments attended per year
- Pregnancy booking and ongoing antenatal care in pregnancy care clinics
- Options for pregnancy care including Midwifery Group Practice, encompassing Galinjera Maternity Program
- Publically funded Homebirth program since 2010
- Perinatal Mental Health Service
- Maternal Fetal Medicine Service

Maternity Services

Joan Kirner Women's & Children's, Sunshine Hospital

What Joan Kirner has to offer

- Maternity Assessment Centre for assessment and monitoring
- Birth Suite, including baths for water immersion in labour and water birth
- Lactation Service providing antenatal and postnatal support
- Maternity inpatient wards providing antenatal and postnatal care
- Maternity @ Home service providing postnatal support after discharge
- Baby Friendly Health initiative accredited facility

Bacchus Marsh Hospital

EDUCATION & LEARNING

Clinical Scope - Regional Health Service 500 births in the past 12 months

Antenatal outpatient clinic

Maternity Assessment Centre - 2 treatment bays for planned/unplanned presentations

Integrated Midwifery Unit- antenatal assessment, labour, birth, postnatal and domiciliary care

6 Birthing suites

8 Postnatal beds

3 bay Level 3 Special Care Nursery

Operating Theatres

Medical Surgical Unit - 18 beds



Western Health & Joan Kirner Facilities

Facilities

- General hospital with a newly renovated ED department
- New Women's & Children's facility opened in May 2019
- State of the art equipment
- Single and double patient rooms with designated space for support people
- Western Health Centre for Health, Research and Education
- Extensive education programs for staff
- Short course programs offered through the Western Health RTO
- Research opportunities – collaboration with Deakin, UoM and VU
- Professor of Midwifery

Graduate Midwife Program

What Can We Offer You?

GMP program

- Consolidation of clinical knowledge and skills in all areas of midwifery practice
- Specific graduate skills sessions on a regular basis
- Clinical Support Midwives and Clinical Midwifery Educators to support and offer you a range of learning experiences
- Regular graduate debrief sessions throughout the program
- Ongoing employment upon successful completion of your Program

Graduate Midwife Program

What Can We Offer You?

GMP Program

- Rotations across the continuum of pregnancy care include Antenatal Clinic, MAC, Birthing, Postnatal, SCN
- Joan Kirner - Bacchus Marsh 3 month exchange program
- Nursing rotations include Newborn Services, Children's ward, Theatre, Medical, Surgical, ED
- Support from Clinical Midwifery Educators and Clinical Support Midwives
- Opportunity to be involved in working parties, projects and committees
- Ongoing education and career advancement opportunities
- Postgraduate studies

Why choose Western Health?

KAITLYN

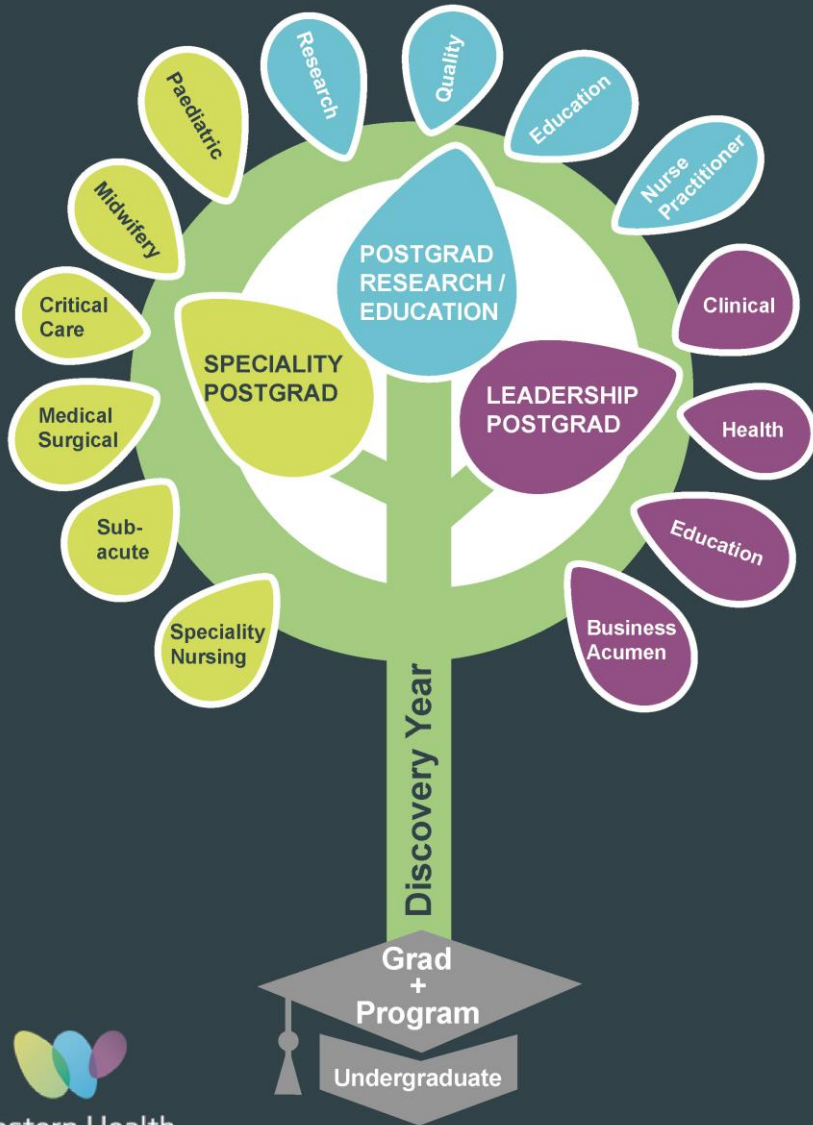
MIDWIFERY GRADUATE

“I chose Western Health because I can get straight into a specialty practise and choose my own rotation based on the areas I am most passionate about.”



Traject-Tree

WESTERN HEALTH
Education
& Learning



Graduate Midwife & Graduate Midwife/Nurse Programs

Year 1

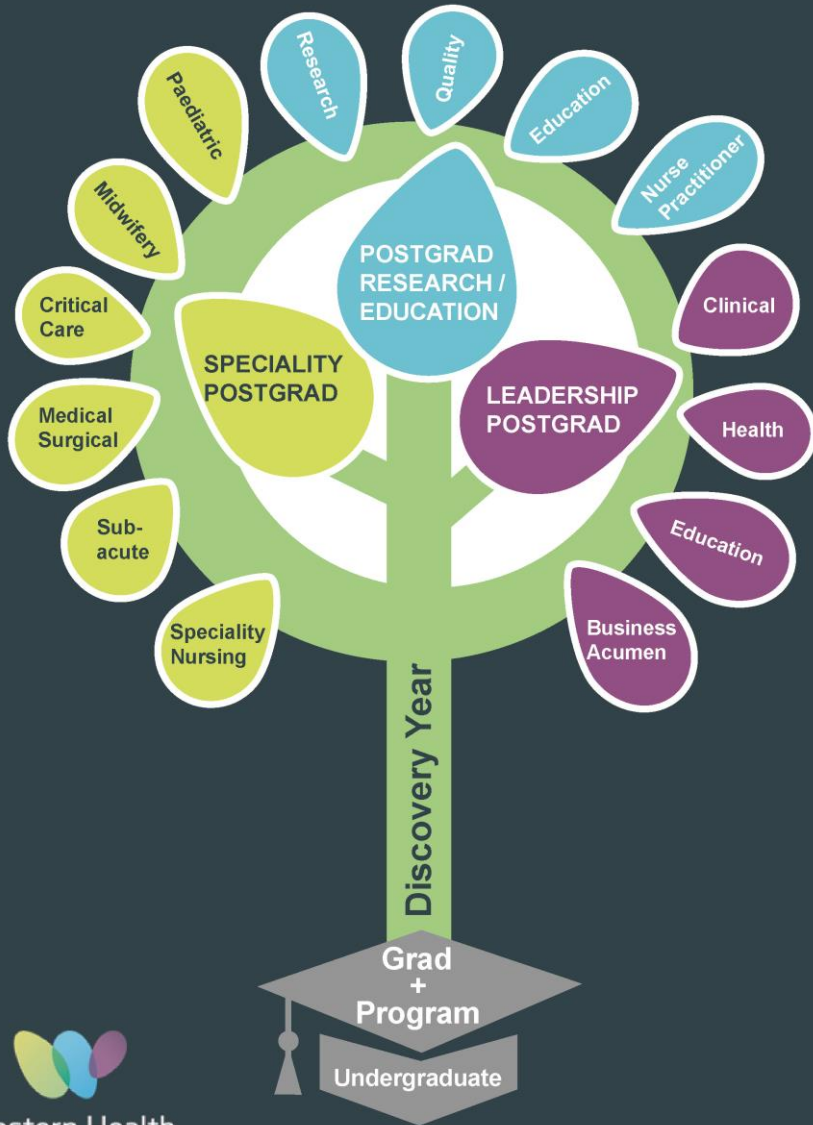
- Traditional supported Graduate Program
- Consists of rotations across the pregnancy continuum and a nursing rotation for those in the Combined Program

Optional second year - Grad +

- Two University accredited theoretical subjects at no cost to graduate
- Additional 4 month rotation to speciality area

Traject-Tree

WESTERN HEALTH
Education
& Learning



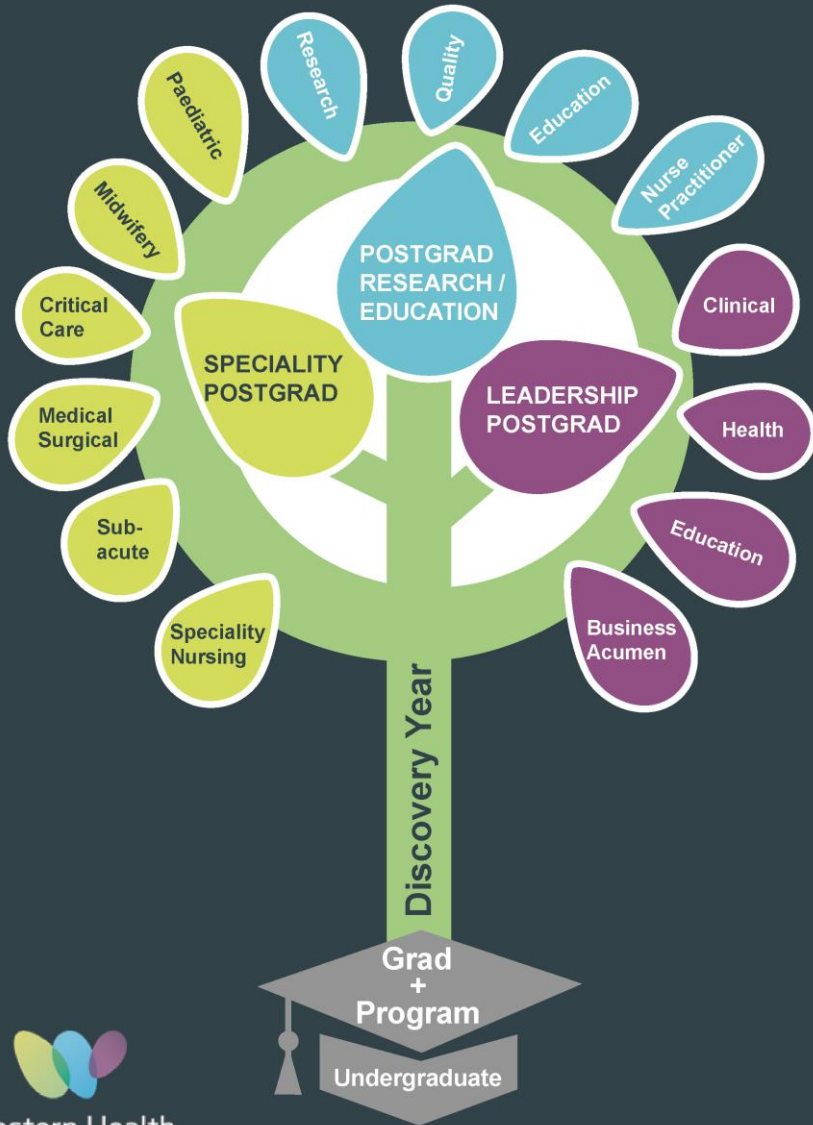
Graduate Midwife & Graduate Midwife/Nurse Programs

Grad + Program

- A program to further develop clinical reasoning and leadership skills
- Additional specialist rotations in Midwifery: MGP
- Additional specialist rotations in Nursing: NBS, Paediatrics, ED, Theatre, Medical/Surgical
- 2 post graduate subjects – Leadership subject and Clinical subject.
- Receive RPL in Graduate Cert, Grad Dip or Masters (partnering with ACU & LaTrobe)

Traject-Tree

WESTERN HEALTH
Education
& Learning



Bridging Program

6 month program

- Supported transition to practice program for early careers midwives
- Consists of rotations across the pregnancy continuum
- Supported continual growth post program

EDUCATION & LEARNING

Comprehensive on-boarding

- 2 week graduate orientation and on-boarding
- 4 study days theoretical and practical
- 4 supernumerary days (*differs for Diploma of Midwifery*)
- 2 supernumerary days on all new rotations
- Professional Development Days -Lactation Consultant
- Training days - FSEP & PROMPT
- GMP Study day - Graduate Study Day



EDUCATION & LEARNING

Comprehensive on-boarding

- IV Cannulation
- Vaginal examination
- Artificial rupture of membranes
- Fetal scalp electrode
- Episiotomy
- Water immersion
- Neonatal life support
- Basic life support
- Discharge examination of the newborn
- Simulation training



On boarding at Western Health



Graduate Midwife/Combined Program and Bridging Program

 About This Course >	 Mandatory Training >	 Rotation - Antenatal Clinic >
 Rotation - Postnatal >	 Rotation - Birthing >	 Rotation - MAC >
 Rotation - Newborn Services: Graduate Midwife 4 Week Rotation >	 Rotation - Nursing >	 AMSAT: Midwifery/Combined Performance Review and Development >
 AMSAT: Bridging Program Performance Review and Development >	 Important dates >	 Graduate Debriefing Sessions >
 Clinical Reasoning Project - Mandatory >	 Continuing Professional Development Record >	 Medication Safety Training - Mandatory >

AMSATs & ANSATs

- **Must be submitted to complete GMP year**
- **We Learn package developed**
- **Use appropriate tool for rotation**



Graduate Midwife/Combined Program and Bridging Program

Graduate midwives & combined	Bridging midwives
1 month	1 month
3 month	6 month
9 month	
Annual PDP (Professional development discussion)	



Maternity Education Hub



About This Hub



Mandatory Training



Monthly Education
Sessions



Medical Education



Women's Clinic



Maternity Assessment
Centre



Birthing



Postnatal



COVID-19



New Staff Orientation



Bacchus Marsh



JK Journals



Education Resources

EDUCATION & LEARNING

Resource Videos

Checking equipment and preparing a birthing room resources.

1. Checking suctioning equipment.

This video demonstrates how bedside suction canisters should be connected and checked as part of daily checking.

2. Checking a birthing room
3. How to set up a birthing trolley?

Labour and birth resources.

1. All fours birth
2. Left lateral birth
3. Magnesium sulphate preparation and administration
4. Medella Vacuum Video (need to sign in to confirm age)

Management of 3rd stage resources.

1. How to check a placenta?
2. How to take placental swabs? (Patient consent gained to use placenta for educational purposes)
3. How to take arterial and venous cord blood gases?

Perineum care resources.

1. Performing an episiotomy using Epis 60 Scissors
2. How to inspect the perineum?
3. Preparing for a perineal repair

Education Resources

EDUCATION & LEARNING

Simulation Training



Intake Plan for 2024

All Programs:

- February
- April
- July
- October



Graduate Programs Application Process

Bachelor of Midwifery and Combined Nursing/Midwifery Applicants

Apply through:

- Postgraduate Medical Council of Victoria (PMCV)

AND

- Western Health Mercury e-Recruit

Date: 5th June 2023 – 7th July 2023

Interview structure – video interviews as per PMCV

Bridging Program Application Process

Graduate Diploma of Midwifery Applicants

Employment Model

- Apply through Western Health Mercury e-Recruit

Date: 5th June 2023 – 7th July 2023

Interview structure – Zoom or face to face

Non-Employment Model

- Apply through PMCV – Postgraduate Midwifery

- Apply through Western Health Mercury e-Recruit

Date: 5th June 2023 – 7th July 2023

Interview structure – video interviews as per PMCV

Application Process

How can I
stand out
from the
crowd?

Listen to
our
instructions

Take notes!

Application Process

1. **Letter of application:** no more than one page
2. **Curriculum Vitae:** concise, including a list of clinical placements (hospital, type of ward/experience and number of days) in any format that is clear.
3. **Academic Transcript:** of all results to date (key to results to be included) must be a certified document. If an online academic transcript, that's deemed certified. What is a certified doc.
4. **Clinical Assessments:**
 - Completed copies of two most recent clinical assessments
 - Combined applicants one nursing assessment and one midwifery assessment
 - If paper-based they must be certified
 - Electronic record can be uploaded directly

Application Process continued

5. References:

- Minimum of 2 clinical references who have directly supervised your undergraduate clinical experience in past 2 years
- Prefer at least one reference form a birthing placement
- Names and accurate contact details, including phone numbers and email addresses on CV
- Combined Program - one referee from each area if possible
- Referees must complete PMCV reference check by 9th July

6. Photo: one recent passport sized photograph attached to application, this aids in remembering applicants when processing post interview.

7. Preference Form: please ensure this is completed and attached to your application

EDUCATION & LEARNING

Preference form

Western Health 2024 Graduate Midwifery Program Preference Form

This form is to give us some information regarding preferences for successful applicants into one of the Western Health Graduate Midwife Program streams for 2024.

Please note these preferences will have no bearing on whether you will be offered a place in any of the programs and will only be reviewed once successful candidates are known.

All Programs Intake Preference (number 1-4 in order of preference)

Feb ☐
April ☐
July ☐
October ☐

Midwifery Program Stream Preference (number 1-2 in order of preference)

Stream A - Joan Kirner Women's and Children's- Sunshine Campus ☐
Rotation (3 months) to Bacchus Marsh Campus (please circle preference) Yes / No
Rotation to Newborn Services (please circle preference) Yes/No

Stream B - Bacchus Marsh Campus ☐
Includes Rotation (3 months) to Joan Kirner Women's and Children's- Sunshine Campus

Combined Nursing/Midwifery Program Stream (number 1-2 in order of preference)

Stream A - Joan Kirner Women's and Children's- Sunshine Campus ☐
Nursing Ward Preference (Number 1-8 in order of preference):

- ☐ RADU (Rapid Assessment Day Unit)
- ☐ 3E (Medical Ward)
- ☐ 1A (Surgical Ward)
- ☐ 1B (Surgical/Medical Ward)
- ☐ 2A (Medical Ward)
- ☐ Children's Ward
- ☐ Newborn Services
- ☐ SHED (Sunshine ED)
- ☐ JK Theatre

Stream B - Bacchus Marsh Campus ☐
3 month midwifery rotation to Joan Kirner Women's and Children's- Sunshine Campus
3 month Nursing rotation to Medical Surgical Unit- Bacchus Marsh

Whilst we do our best to accommodate your preferences, there will be times you may not get your preferred intake date, stream or nursing ward due to the need to evenly balance the junior workforce on the units.

Preparation for end of degree?

- **Missing requirements to register:** Start having conversations with your University now! Discuss placement hours required, numbers required to meet. **The earlier you notify your university the better!**
- **Contact:** We will be in contact with you regarding where you are at in relation to completing your course once matched to Western Health.
- **University sign off:** ensure you have the final sign off completed with your university as soon as all requirements are met and degree is completed to avoid delays with your AHPRA registration.

Preparation for end of degree?

- **Working with Children's Check:** must be changed from *Volunteer to Employee straight away!*
- **Immunisation:** Collate evidence of immunization to supply for recruitment
- **Contracts for successful candidates:** Ensure you read all required documentation and submit everything by the due date.
- **AHPRA Fast Track:** You can do a pre-registration with AHPRA which fast-tracks the process.

Preparation for end of degree?

AHPRA Fast Track! Wow!

**You can do a pre-registration
with AHPRA which fast-tracks the process**

Within 60 days of anticipated course completion

Further Information

www.westernhealth.org.au

Denise Ryan

Graduate Midwife Program Coordinator (Acting)

email: GMP@wh.org.au

Phone: 0481 455 099