



Western Health

Pharmacy Internship at Western Health

 Western Health

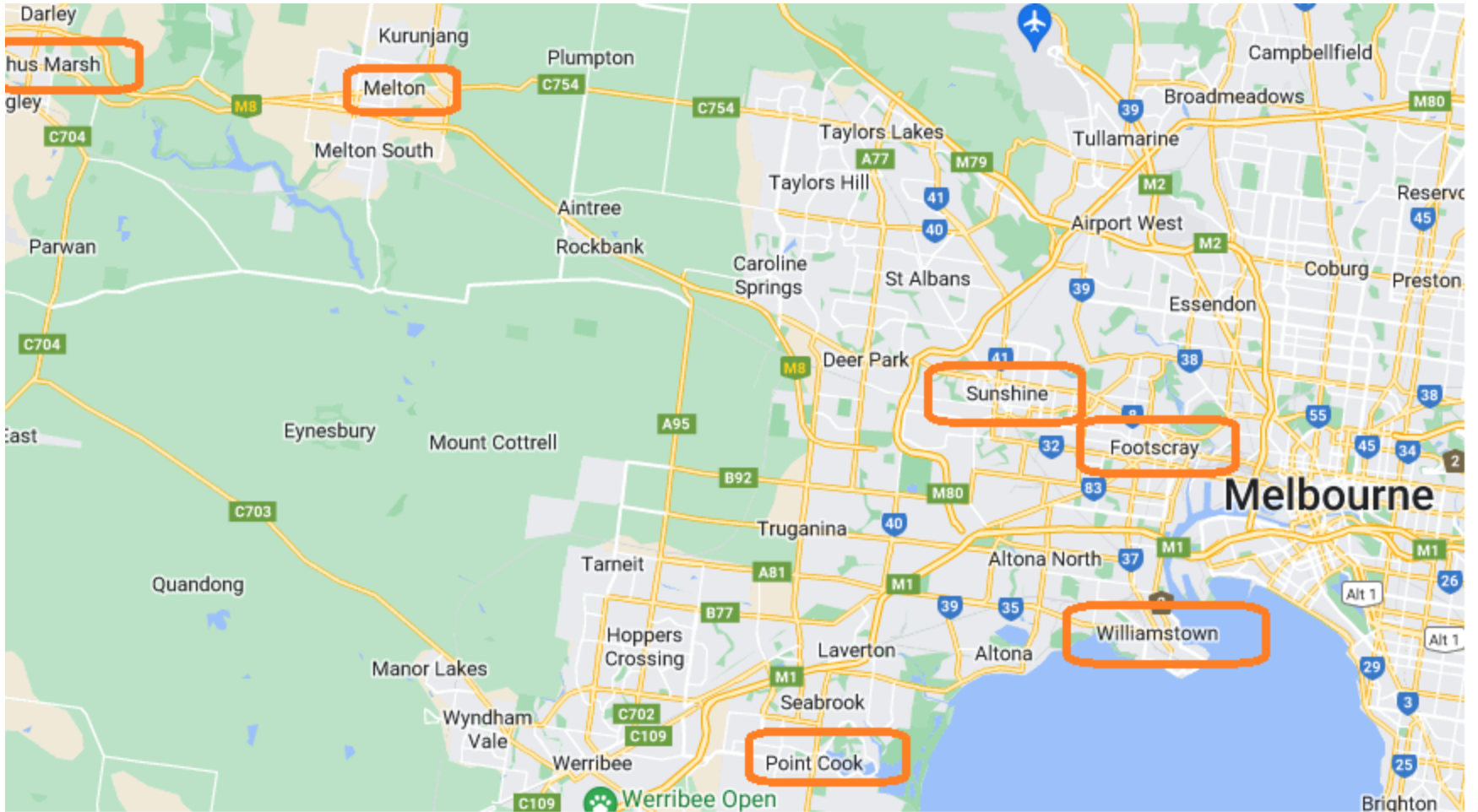
Together, caring for the West, our patients,
staff, community and environment.



**PHARMACY INTERNSHIP
PROGRAM**

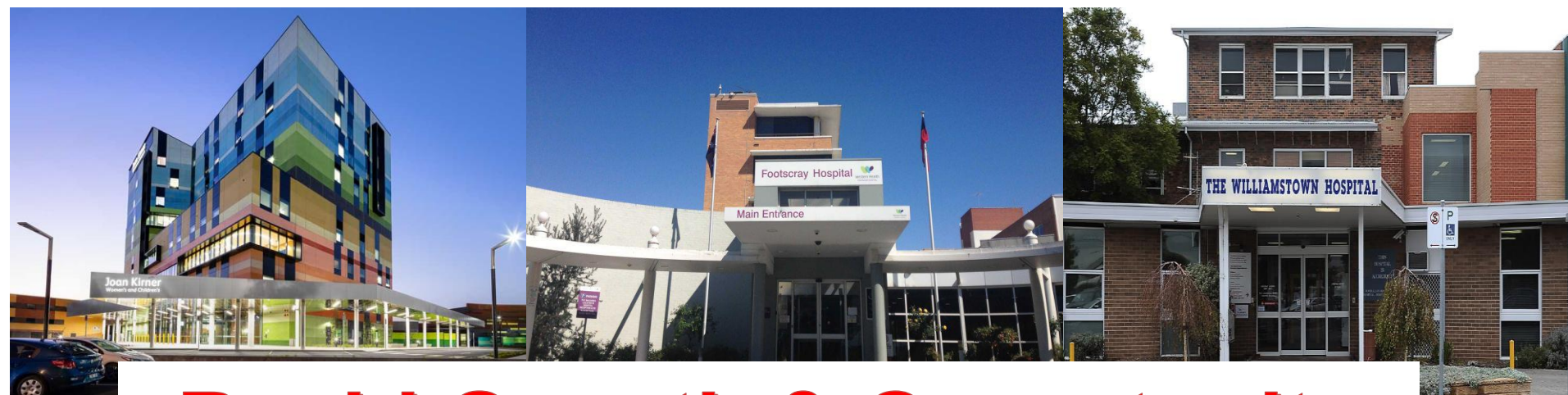


*Compassion
Accountability
Respect
Excellence
Safety*



About Western Health

- Comprises of 3 hospitals:
- Sunshine (600)>Footscray (300)>Williamstown> Sunbury Day, Melton & Bacchus Marsh.
- A dynamic community being one of the most culturally diverse in Victoria, with 800,000 people in out catchment. More than 100 different languages spoken in the area
- Projects: Sunbury, New Melton, New Footscray Point Cook Community Hospital, Mental Health beds at Sunshine
- Pharmacy Service & Pharmacy Department Expansion (including Automation)



Rapid Growth & Opportunity

Western Health Values

Compassion - consistently acting with empathy and integrity.

Accountability - taking responsibility for our decisions and actions.

Respect - for the rights, beliefs and choice of every individual.

Excellence - inspiring and motivating innovation and achievement.

Safety - prioritizing safety as an essential part of everyday practice.





Why choose Western Health ?

- A teaching hospital that fosters a supportive environment to develop essential clinical, critical thinking and team works skills required as registered pharmacist
- Electronic Medical Records (Cerner EMR) since November 2018
- Great opportunity to gain valuable experience from specialist pharmacists
- Employee benefits:
 - Salary Packaging
 - Fitness Passport and onsite gyms
 - Superannuation
 - Employee Counselling Services
 - Discounted private health insurance
- Reward and recognition programs in place to acknowledge employees
 - INSPIRE, Employee Service, Best Care, Scholarship and Grants



Delivered 2021/22...

unitedED
ED UPDATES + SUPPORT

[Home](#) / BAU, The Hub: Training and Orientation – Staff Webinar #3 This Thursday

BAU, The Hub: Training and Orientation – Staff Webinar #3 This Thursday



SHED Expansion Update



Emergency Department Expansion
Sunshine Hospital





Now- Sunshine Hospital Expansion Project (SHEP)



With the recent growth in points of care at The Sunshine Hospital, our main Pharmacy has reached capacity. An expansion of the current Pharmacy footprint from 350m² to 800m² is being undertaken to support clinical operations. The expansion accommodates for growth in staff numbers, installation of Automated Dispensing Cabinets (ADC's) systems to automate many of the routine tasks and more efficiently store extensive stock holdings and the introduction of onsite medication manufacturing in an Aseptic Suite.



Nemo and Dory



Image: Pharmacy Automated Dispensing Cabinet (ADC)

Now- Mental health Beds Expansion Sunshine Hospital

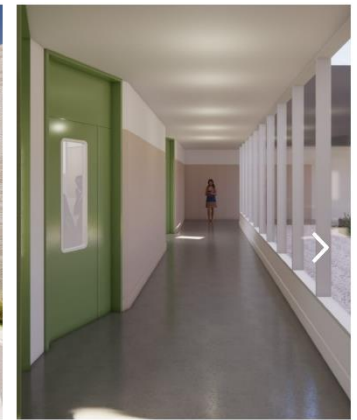
New 52 bed mental health facility



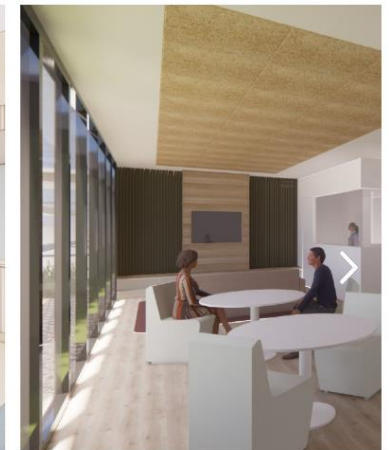
Artist impression of an aerial view of the new mental health facility at Sunshine Hospital.



Artist impression of the landscaping and exterior of new mental health facility at Sunshine Hospital.

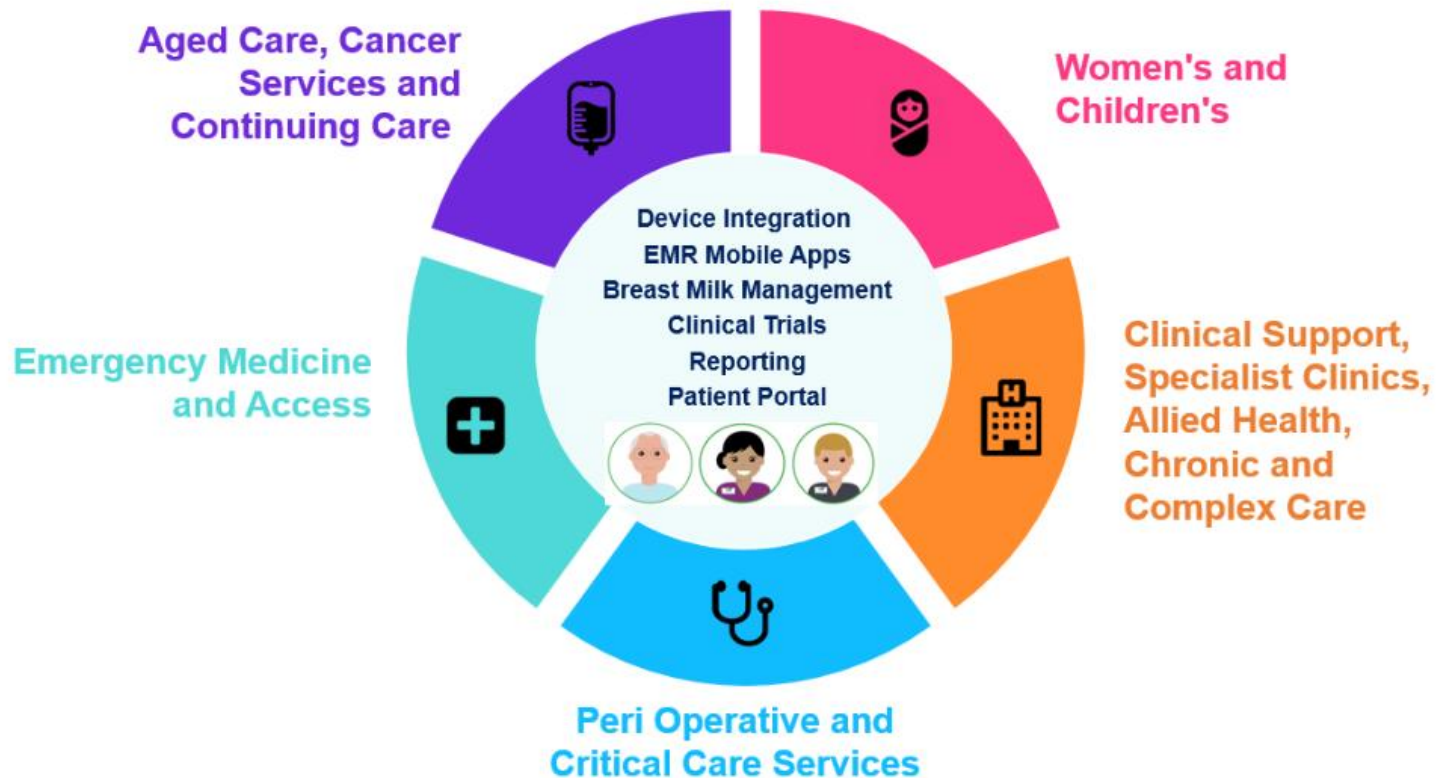


0310R



Now - EMR Phase 2.1

EMR Phase 2.1 scope





Looking ahead...2025



**NEW
FOOTSCRAY
HOSPITAL**

A New Hospital for the West

Construction of your Footscray Hospital is now under way. The Victorian Government has committed up to \$1.5 billion to this new facility, being built at the intersection of Geelong and Ballarat roads in Footscray, in the largest ever health infrastructure investment in the state.



[Read more](#)



Looking ahead...



- Melton is one of the fastest growing regions in Australia and the new Melton Hospital will be managed under Western Health.
- **Strategic plan for 2015 to 2020 period includes goals such as:**
- Growing and improving the delivery of safe care, high quality care
- Communicating with our patients, partners and each other
- Valuing and empowering our people

Intern Program

- 7 intern positions available (5 DHHS, 2 self funded)
- Rotational across Footscray and Sunshine
- Tutorials held weekly (1.5hrs) with a focus on case studies, drug knowledge and application of knowledge in clinical scenarios with 3 preceptors
- Preparation dedicated to written exam and oral examination
- Intensive training week conducted before clinical and manufacturing rotations.
- Rotations are 4 weeks at a time and are mix of clinical and operational
 - Operational: Manufacturing, Dispensary and Outpatients
 - Clinical: Coronary Care, Surgical, Respiratory, Aged Care, Stroke , General medical, Neurology, Pediatrics & Maternity
 - Other allocations: HARP, QUM time, ED, Med Info

Intern Program

- Western health specific competency assessments are utilized to ensure appropriate intern training program requirements are met.
- **Multidisciplinary activities:**
 - Antimicrobial Stewardship Ward Rounds
 - Acute Pain Management Service (APMS) Rounds
 - Hospital Outreach Medication Reviews
- Western Health Pharmacy supports the Monash Intern Foundation program (IFP) and Monash Intern Training Program (ITP)

Mentoring & Oral Exam Preparation



Social Dinner
Mentored by ex WH
interns
Minimum 6 Practice
oral exams



Exam Preparation & Job opportunities at end of intern year

- Preceptor led study & exam preparation
- Early information about the both APC intern written exam & board oral exam
- Practice exams with pharmacists across the department
- Job opportunities



Hear from our 2023 interns



Visit our Pharmacy Careers Page



<https://www.westernhealth.org.au/Careers/Pages/Pharmacy.aspx>



Information available on our website:

- Pharmacy Internship Program Brochure
- [Internship Frequently Asked Questions \(FAQ's\)](#)

Do you accept international student applications for the 2 hospital funded positions? **2. Am I eligible to apply for the positions?**

There are three eligibility groups for the available Government and hospital self-funded intern positions

Group	Definition	Can apply for
1	Australian and New Zealand citizens and permanent residents who are also graduates of Victorian Pharmacy programs	All positions (government and hospital self-funded) from round 1
2	Australian and New Zealand citizens and permanent residents who are graduates from all other programs	- Hospital self-funded positions from round 1 - Government funded positions from round 3
3	All other applicants	- Hospital self-funded positions from Round 1 - Not eligible for government funded positions

Applicants from groups 2 and 3 who completed their pharmacy qualifications in any country other than Australia, Canada, Ireland, New Zealand, the UK or the USA will be required to submit a skills assessment letter from the Australian Pharmacy Council to confirm their eligibility to work in Australia.

Overseas students completing their degree at a Victorian University will be required to submit a letter stating that they are in their final year at a Victorian University. SHPA reserves the right to confirm this with the relevant university.

When does the intern program start?

In the first week of January (Tues 2nd January 2024 – Mon PH)

Is mentoring available to interns?

Yes. Interns are usually paired with interns from prior years.

Who can I contact if I have further questions?

Email: Jenny Lau; Senior Education Pharmacist (jenny.lau@wh.org.au)

Email: Shani Paiva; Intern Coordinator (shani.paiva@wh.org.au)

Time for questions? (Open to all speakers)



- Start dates?
- Leave entitlements?
- Specialty Pharmacists?
- Residency?
- Tours?
- Culture?

Jenny Lau, Senior Education Coordinator Footscray Campus
T: 03 8345 6442 or 0466377535
Email: Jenny.Lau@wh.org.au

Shani Paiva, Pharmacy Intern Coordinator
T: 03 8345 6344
Email: Shani.Paiva@wh.org.au

Further links on Western Health

About us:

<http://www.westernhealth.org.au/AboutUs/Pages/default.aspx>

Our sites and services:

<http://www.westernhealth.org.au/OurSites/Pages/default.aspx>

Pharmacy:

<http://www.westernhealth.org.au/Services/Pharmacy/Pages/default.aspx>

Pharmacy careers page:

<https://www.westernhealth.org.au/Careers/Pages/Pharmacy.aspx>

Facebook:

<https://www.facebook.com/westernhealthau/>

Instagram:

<https://www.instagram.com/explore/locations/268413693665217/western-health-footscray/>