

WESTERN HEALTH

# Education & Learning

---

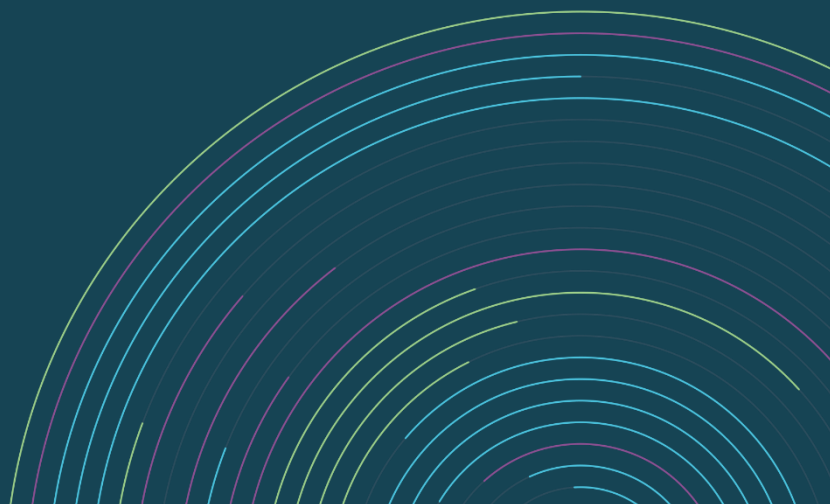


## GRADUATE ENROLLED NURSE PROGRAM

2021



Western Health



## Western Health: About Us

### Acknowledgments



Western Health respectfully acknowledge the Wurundjeri and Boonwurrung Elders and people of the Kulin nation as Traditional Owners of the lands on which Western Health sites are located.

### Overview

Western Health (WH) manages three acute public hospitals:

- Footscray Hospital
- Sunshine Hospital
- Williamstown Hospital

It also operates the Sunbury Day Hospital, and a Transition Care Program at Williamstown. A wide range of community based services are also managed by Western Health, along with a large Drug and Alcohol Service.

WH provides a comprehensive, integrated range of services from its various sites; ranging from acute tertiary services in areas of emergency medicine, intensive care, medical and surgical services, through to subacute care and specialist ambulatory clinics.

Western Health provides a combination of hospital and community-based services to aged, adult and paediatric patients and newborn babies.

### Closing the Gap

WH is committed to achieving equality in health status between Aboriginal and Torres Strait Islander peoples and non-indigenous Australians.

WH has reaffirmed its commitment to improving the health of Indigenous Australians residing in the Western suburbs after becoming an official signatory to the national 'Closing the Gap' campaign.



### Our Community

- Has now reached approximately 800,000 within our primary and secondary catchments
- Is among the fastest growth corridors in Australia
- Covers a total catchment area of 1,569 sq. km
- Has a diverse socio-economic status- is one of the most culturally diverse communities in Victoria with 38% speaking a language other than English at home
- Speaks more than 100 different languages/dialects

## Graduate Enrolled Nurse Program

### Intake Dates

January 25<sup>th</sup> 2021

June 28<sup>th</sup> 2021

### Aim

The Enrolled Nurse Graduate Program (ENGP) is designed to support Graduate Nurses in the clinical areas and provide opportunities to consolidate both theoretical and practical clinical skills. The Program supports Graduates making the transition from student to advanced beginner practitioner in a friendly and stimulating working environment.

- Act an advocate of the individual, ensuring maintenance of dignity and integrity, whilst promoting the clients rights to make informed healthcare decisions
- Demonstrate the ability to reflect on nursing practice, thus promoting ongoing professional development of self and colleagues
- Apply lifelong learning strategies to promote personal and professional development

### Learning Outcomes

By the completion of the Program Enrolled Nurse (EN) Graduates should be able to:

- Practice within the Nursing and Midwifery Board of Australia (NMBA) Enrolled Nurse standards for practice (2016)
- Accurately assess, plan, implement, evaluate and document nursing care via clinical reasoning
- Work as an effective member of the multidisciplinary team in meeting the values and mission of the organisation

### Conditions of Employment

Successful applicants must hold a valid registration with the Nursing & Midwifery Board of Australia (NMBA) via the Australian Health Practitioner Regulation Agency (AHPRA) as an Enrolled Nurse (Division 2).

The Program is 6-month (26-weeks) in duration, with Graduates expected to work a rotating roster. All Graduates employed at Western Health hold permanent part-time employment (64 hours/fortnight), to ensure work-life balance whilst supporting ongoing study requirements.



### Key Contacts

Christine Pirotta  
Enrolled Nurse Graduate Educator

Western Health  
[christine.pirotta@wh.org.au](mailto:christine.pirotta@wh.org.au)

## Graduate Enrolled Nurse Program: Overview

<b>Program Duration</b>	<ul style="list-style-type: none"> <li>• 6 months (26 weeks)</li> <li>• Allocated across three campuses: <ul style="list-style-type: none"> <li>- Footscray</li> <li>- Sunshine, and</li> <li>- Williamstown</li> </ul> </li> </ul>
<b>Program Intake</b>	<ul style="list-style-type: none"> <li>• January 2021</li> <li>• June 2021</li> </ul>
<b>Orientation (3-days)</b>	<p>Structured Orientation Program, consisting of:</p> <ul style="list-style-type: none"> <li>• 1 x Organisational Orientation Program (Day 1)</li> <li>• 2 x Graduate-specific Study Days (Day 2 &amp; 3)</li> </ul>
<b>Clinical Supernumerary Days</b>	<ul style="list-style-type: none"> <li>• At commencement of the rotation, supernumerary time on allocated ward.</li> <li>• 4 days</li> </ul>
<b>Study Days &amp; Education Sessions</b>	<ul style="list-style-type: none"> <li>• 2 x additional ENGP Study Days, structured throughout the year</li> <li>• Regular Debriefing sessions</li> <li>• Additional Graduate-Specific education sessions</li> </ul>
<b>Professional Development Days</b>	<ul style="list-style-type: none"> <li>• 1 x Professional Development Day, in a clinical area of interest (shadow-shift)</li> </ul>
<b>Clinical Support</b>	<ul style="list-style-type: none"> <li>• Assigned Preceptor, member of allocated clinical area</li> <li>• Assigned Clinical Nurse Educator, affiliated with allocated clinical area</li> <li>• Nurse Unit Managers</li> <li>• Colleagues</li> </ul>
<b>Employment</b>	<ul style="list-style-type: none"> <li>• As per Nurses (Victorian Health Services) Award</li> <li>• Permanent employment contracts offered</li> <li>• Part-time (4-days/week)</li> </ul>

### Annual Leave

2-weeks paid annual leave will be accrued throughout the Graduate Program, as per the Nurses Award 2010 (Nurses and Midwives – Vic Public Sector, Single Interest Employers, EBA 2016-2020).

Please ensure annual leave is approved prior to finalising travel plans.

## Clinical Rotations

The Enrolled Nurse Program has been developed to support Graduates making the transition from student to advanced beginner practitioner in a friendly and stimulating working environment. Clinical rotations are allocated based on Graduate Nurse requests and clinical availability. Clinical rotations available at Western Health are:

### Footscray

Orthopaedic & Neurosurgical  
General Medical  
General Surgical  
Respiratory, Infectious Diseases & Gastroenterology  
Acute Aged Care  
Rehabilitation

### Sunshine

Geriatric Evaluation Management  
Palliative Care  
Rehabilitation  
Acute Aged Care  
Oncology  
Neurology & Stroke  
Respiratory, Infectious Diseases & Gastroenterology

### Williamstown

Geriatric Evaluation Management  
Transitional Care



## **Enrolled Nurse Graduate Program Virtual Information Session**

Our information sessions provide an opportunity to learn more about Western Health's Enrolled Nurse Graduate Program, to meet staff and ask questions.

Due to Covid-19 pandemic, all information sessions will be held virtually. Please refer to our Graduate Nurse Program webpage for future details regarding information sessions at: [www.westernhealth.org.au](http://www.westernhealth.org.au).

## **Professional Development: Your Future**

Western Health offers a variety of opportunities for Professional Development, all of which are coordinated by the Centre for Education & Learning.

Clinical support, professional development and continuing education for all nurses, health professionals and non-clinical staff.

A wide range of short-courses and study days.

We are a Registered Training Organisation, and provide our staff with an opportunity to complete accredited training on-site. All programs incorporate content on current trends, research and best practice standards.



## Past Graduates: Testimonials

*"The supernumerary week was good for me as I felt as though I could do a lot but also have the comfort of my buddy there if I was unsure or falling behind. I felt as though my clinical preceptor Chantelle was patient, professional and very helpful in teaching me different skills if I was having trouble with a clinical assessment. I have felt lucky that we were able to have four supernumerary days to feel more confident with our skills and new surroundings prior to taking a patient load."*

*"I learned a lot from GEM Rehab; every day is different. I got to know more about the patient's diagnosis and medications usually administered in the ward. The Educators were really supportive and always checking up on us on a daily basis..."*

*"Orientation week was very helpful and informative. It helped to calm down my nerves about starting in the field."*