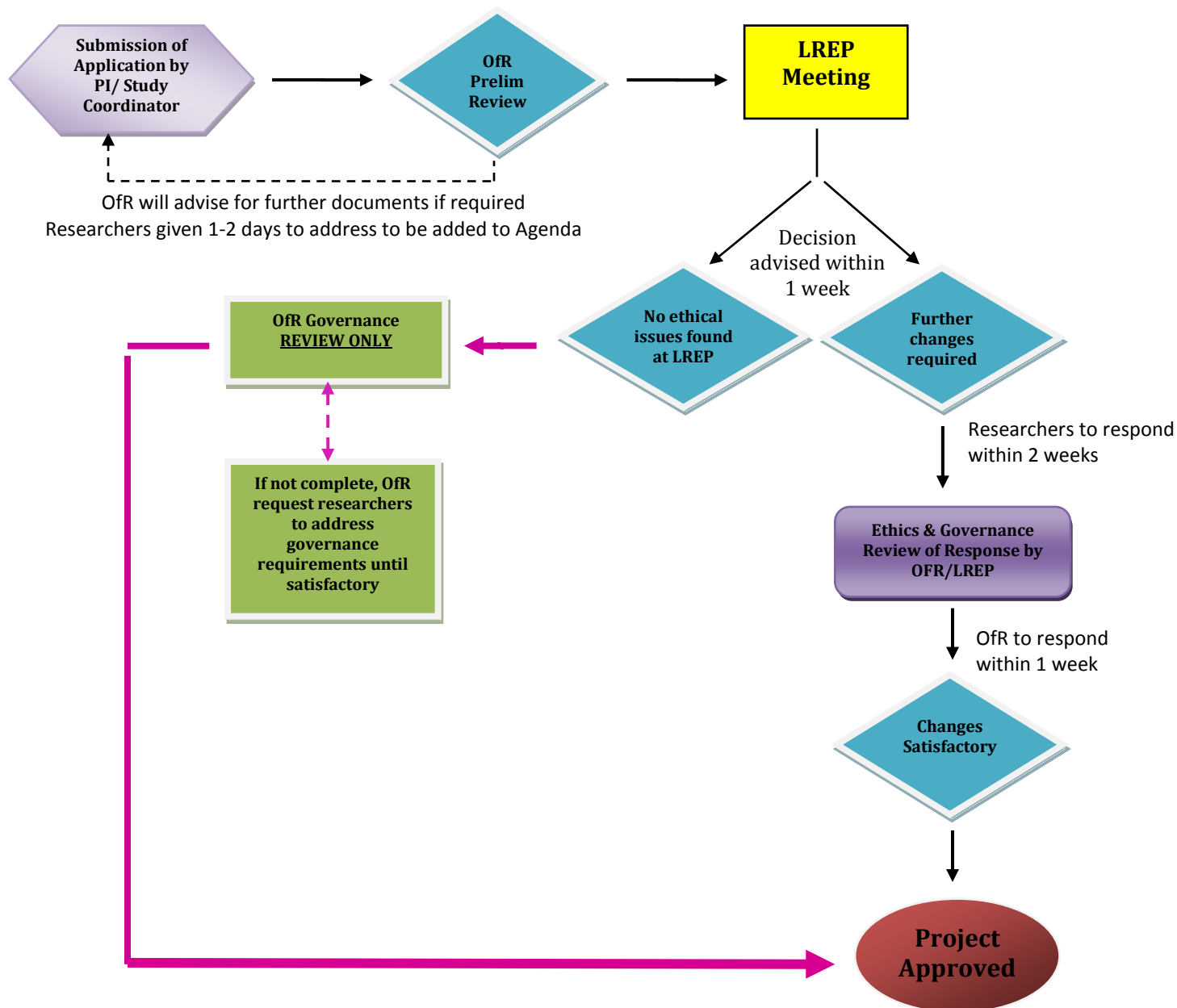


Office for Research Low Risk Ethics Review Process



Western Health



LNR Documents required:

- Human Research Ethics Application (HREA)
- Victorian Specific Module (VSM)
- Protocol
- WH Site Specific Form (SOA)
- Statement of Approvals
- Curriculum Vitae's
- Other Docs as applicable:
 - Participant Information and Consent Form (PICF)
 - Advertisements
 - Surveys/Questionnaires
 - Telephone Scripts
 - Letter of Invitations
 - Honorary Researcher Application Form
 - Databank Registration Form
- Application Fee

Abbreviations:

- **PI** -Principal Investigator
- **OfR** -Office for Research
- **LREP** -Low Risk Ethics Panel