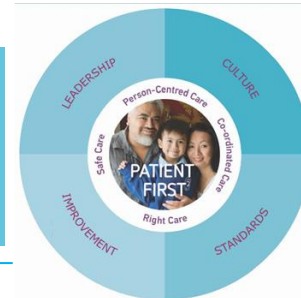




Western Health

# INTRODUCTION TO ONCOLOGY

Best Care: Safe Care



## Introduction to Oncology:

**Date:** 13 August 2015

**Time:** 0800 – 1630 hrs

**Venue:** WCHRE Seminar Room 1 & 2  
Sunshine Hospital

## Program Eligibility:

Registered Nurse Div 1 and Div 2

## Registration:

Click here to Register:

<http://enrol.vetenrol.com.au/?clientid=VT-WESTERNHEALTH>

Tel: 03 8345 6845 / 8395 8183

Email: whs-ceadmin@wh.org.au

## Cost:

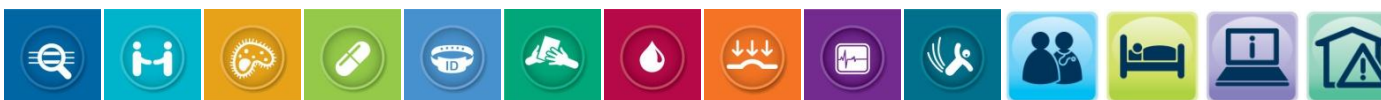
- ▶ Western Health Staff: \$30.00
- ▶ Campus Based External Applicants \$98.00
- ▶ External Applicants: \$195.00

## Course Aim:

An overview of cancer nursing and management of patients with oncological symptoms.

## Topics:

- ▶ Basic Anatomy and Physiology and disease process symptoms
- ▶ Overview of management of oncological emergencies
- ▶ Treatment of Modalities
- ▶ Educational Resources
- ▶ Supportive Care Nurses
- ▶ Current Research



Compassion Accountability Respect Excellence Safety