

# Graduate Nurse Program 2020

WESTERN HEALTH

**Education  
& Learning**

---



Western Health

# About Western Health

Western Health is the leading healthcare provider of acute health services for people living in western metropolitan Melbourne.

## Three acute public hospitals

- Sunshine including Joan Kirner to open in May 2019
- Footscray
- Williamstown

## Transition care services

- Hazeldean

## Day services

- Sunbury Day Hospital

## Western Health provides the following services:

- Pregnancy and newborn care
- Children's and adolescent health
- Aged care
- Cardiac Care
- Renal Disease
- Palliative care
- Surgical Care
- Medical Care
- Emergency Care
- Theatre

Our services embrace an inspiring and vibrant community, which is culturally rich and diverse, and often with people who are vulnerable. We care for one of Australia's most rapidly growing populations, who speak more than 100 different languages and dialects, and every day our care is shaped by the needs and requirements of each individual.



"It has been very beneficial to come together and debrief as a group at the GNP Time Outs where we discuss effective ways to work and problem solve with our graduate educators."

# Graduate Nurse Program

## Aim

The aim of the Graduate Nurse Program (GNP) is to facilitate the continuing professional development of the graduate practitioner of nursing. The program facilitates consolidation of undergraduate preparation, particularly integrating theory to practice and further development of professional, clinical and competency skills. To assist this we offer support through two six-month rotations. Rotations offer a broad spectrum of clinical exposure with the opportunity to consolidate in a consistent environment.

## Intakes

January 2020

April 2020

## Conditions of Employment

Successful registration with the Nursing & Midwifery Board of Australia via Australian Health Practitioner Regulation Agency (AHPRA) as a Registered Nurse.

All graduate nurse positions at Western Health are part-time (64 hours/fortnight). Western Health offer permanent employment contracts for all graduate positions.

The Graduate Nurse Program consists of 53 weeks of rotating rosters.

## Annual Leave

Five weeks of paid annual leave will accrued throughout the graduate year, as per the nurses award. Graduates will need to negotiate leave with their relevant Nurse Unit Manager. Graduates are required to take two (2) weeks of annual leave in each of their rotations – the remaining week is either rolled over on re-deployment or paid out at cessation of employment.

Please have your annual leave approved before you finalise any travel plans.

*“...flexible roster and part time hours worked really well! I was able to balance my work and social life which was really important for me.”*

# Clinical Rotations

Western Health offers two (2) rotations during the 12-month program with the view to consolidate nursing knowledge and skills within a supportive environment. Western Health offers a wide range of clinical environments for graduates to work in. Graduates will be asked to nominate rotation preferences which will be considered when allocating rotations for the year.

Participants can choose from a wide selection of rotations during the GNP at Western Health:

- Acute Aged Care
- Adult Specialty Clinics
- Coronary Care Unit
- Day Procedure Unit
- Drug Community Health
- Drug Health Services
- Emergency Services
- General Medical
- General Surgical
- Hazeldean – Transition Care
- Head & Neck Surgery
- Neurology/ Stroke
- Nurse Pool
- Infectious Diseases
- Oncology
- Orthopaedics
- Paediatrics
- Palliative Care
- Plastics
- Radiology
- Rehabilitation
- Renal
- Haemodialysis
- Respiratory Medicine
- Special Care Nursery
- Sub-Acute Care
- Theatre
- Urology



*“I chose Western Health as it offered a wide range of clinical areas in a multi-culturally diverse community. I liked the 6 month rotations as it was an adequate period of time to settle in, consolidate and develop my skills whilst having a real sense of belonging...”*

# Study Days

The Graduate Nurse Program offers 6 paid study days.

Study days are designed to build on your undergraduate knowledge and provide practical additions that will assist you in your clinical practice. Study Days are developed and delivered by clinical experts. Topics are wide and varied and have been developed in response to evidence based practice and graduates needs. Western Health also has a Simulation Centre to further assist you in refining your clinical skills in a safe environment.

## Non Unit-based Hours

- 1 corporate orientation day and 3 graduate nurse orientation days at the commencement of the program
- 2 Supernumerary days (minimum) - at the commencement of each rotation
- 1 further graduate study day
- A professional development day in an area of your choice
- You can elect to attend a study of your choice from the Western Health offerings

*“I found that overall, Western Health offered great support and provided me with an opportunity to consolidate my skills and further my knowledge. I have also made lifelong friends and networks...”*

# Clinical Support

- Ward based clinical nurse educators
- Preceptors
- Regular graduate education sessions
- Monthly time out sessions – an opportunity to debrief with your peers

*"It has been very beneficial to come together and debrief as a group at the GNP Time Outs where we discuss effective ways to work and problem solve with our graduate educators."*

## Graduate Nurse Program Information Nights

**FOOTSCRAY HOSPITAL** - Auditorium  
Tuesday June 4<sup>th</sup> 4:30pm – 6:00pm

**SUNSHINE HOSPITAL** – Auditorium, WCHRE  
Monday 13<sup>th</sup> May 4:30pm – 6:00pm  
Tuesday 28<sup>th</sup> May 4:30pm – 6:00pm

Bookings are not required.

Please refer to our website for parking information.

# More Information

For more information on our Graduate Nurse Program visit our website: [www.wh.org.au](http://www.wh.org.au)

## Questions

### GNP Coordinator

Robyn Peel

Email: [gnpinformation@wh.org.au](mailto:gnpinformation@wh.org.au)

Phone: 03 8345 6097

## How Do I Apply?

- Applications are open from 3rd June to 19th July 2019. Third-year nursing students applying via computer match must follow the rules and regulations as stated by the Post Graduate Medical Council of Victoria (PMCV). In addition to your PMCV application an electronic application to Western Health must also be made.
- For further information visit our website [www.wh.org.au](http://www.wh.org.au)
- Applications uploaded electronically must include:
  - Cover Letter (no more than one page).
  - Curriculum Vitae including a list of all undergraduate clinical placements (hospital, type of ward/experience, dates and number of placement days).
  - A certified academic transcript of all results (key to results to be included).
  - Complete copies of two recent clinical assessments. One of these must be from a recent adult acute placement.
  - There will be information about reference forms in the application process
  - One recent passport size photograph.

**Western Health will not accept any late or offline applications.**

# Professional Development

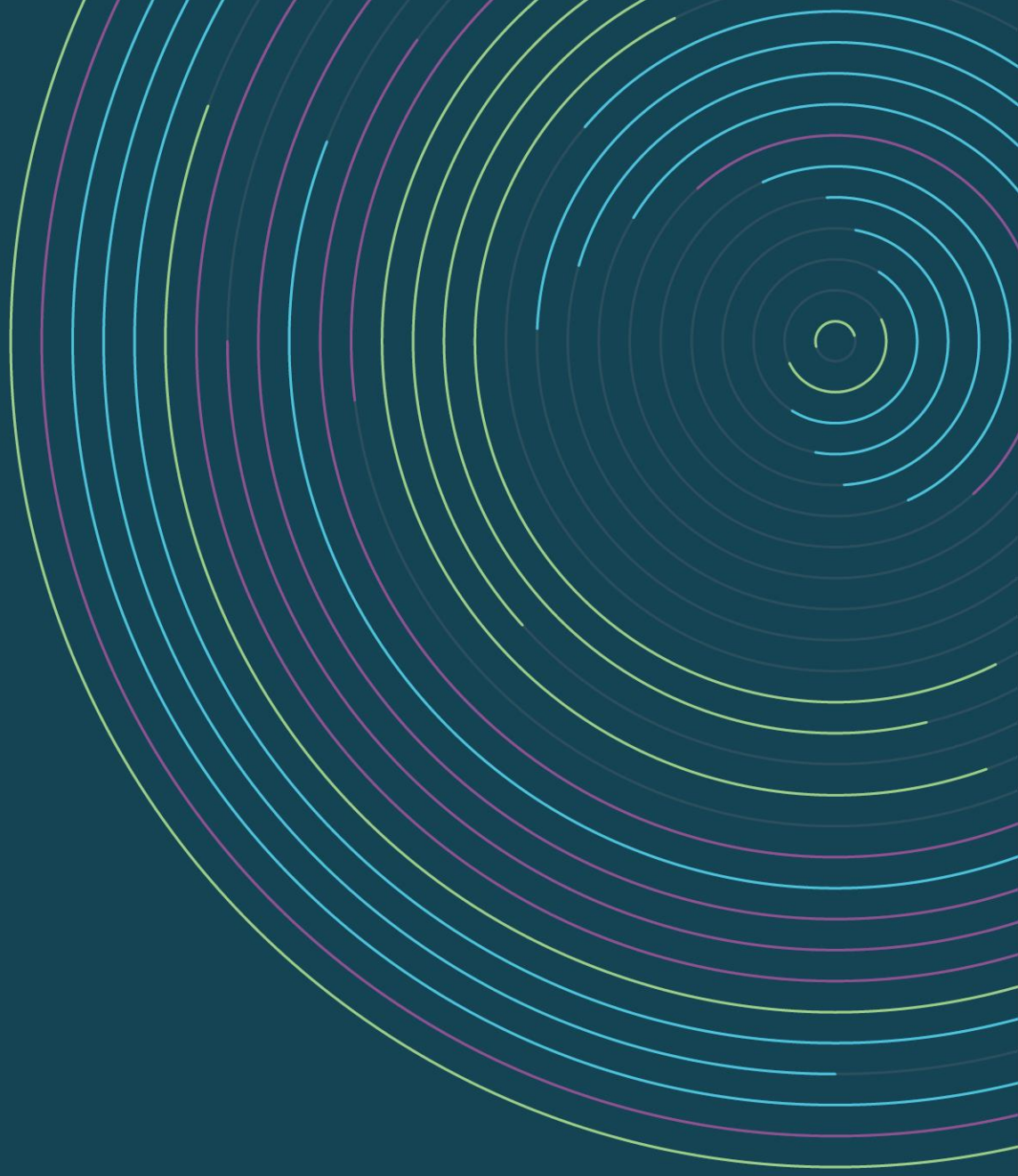
- Western Health offers wide-ranging opportunities for professional development all of which are coordinated by the Centre for Education:
- Clinical support, professional development and continuing education for nurses, health professionals and non-clinical staff
- A wide range of short course programs on offer
- Discovery programs in specialist areas: ICU, Theatre, CCU, Emergency and SCN and Paediatrics
- Postgraduate nursing opportunities in general/specialised nursing
- Western Health is a Registered Training Organisation with a broad scope of offerings.
- All programs incorporate information on current trends, research and best practice standards.

For more information on employment opportunities with Western Health visit our website on [www.wh.org.au](http://www.wh.org.au)



*Get the best start with the  
Western Health Graduate Nurse Program*





Western Health

[wh.org.au](http://wh.org.au)

