



Western Health

ICU Discovery Program

Considering a career in Critical
Care Nursing?

Introductory 12 month program to ICU



What is the ICU Discovery Program?



- Opportunity for Registered Nurses to explore critical care nursing in a supported environment
- Program conducted over 12 months.
- Clinical and theoretical components.
- Focus on individual growth and development.

Western Health Intensive Care Unit



- Patients admitted from Emergency, Cath Lab, Operating Suite, Wards and other hospitals.
- Patients requiring mechanical ventilation, renal replacement therapy, haemodynamic monitoring and support.
- 1:1 ratio for ICU patients, 1:2 ratio for HDU patients.
- ANUM and Team Leader on most shifts.
- ICU Registrar and Resident 24 hours a day.

Who is there to support you?

- ICU Educators 7 days a week.
- NUM, ANUMS and Senior Staff.
- Critical Care Nurses: over 70% of our nurses have Post Graduate qualifications in critical care.
- ICU Equipment nurse.
- ICU Research Coordinators
- ICU Medical Staff

ICU – what can it offer?



- Exposure to a wide variety of complex patients.
 - Focus on whole patient: relationships between systems and understanding the rationale of treatment.
 - The challenge of working with Technology / Patient / Family / Medical Team.
 - Increased skill level and confidence at the bedside.
-
- Working closely with the Medical team and allied health.
 - Involvement in the management of acute situations.
 - Participation in patient management planning.

What will you see and do?



Initially focus on HDU patients:

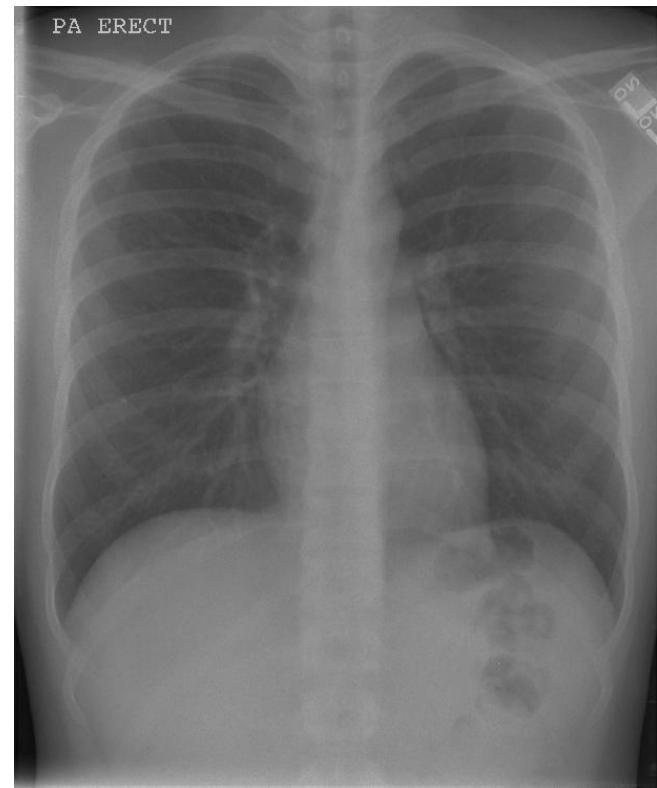
- Arterial Lines
- Central Lines
- Epidurals
- Arrhythmias
- Low dose vasopressor agents
- Non invasive ventilation: BIPAP
- Tracheostomies

Gradually skill up to caring for stable ventilated patients

What will you see and do?

Assist with procedures:

- Intubation and commencement of mechanical ventilation
- Non invasive ventilation
- Extubation
- Insertion of invasive monitoring
- Insertion of tracheostomies
- Bronchoscopy, Gastroscopy



What will you see and do?



Main Themes:

- Patient assessment
- Arterial and Central lines
- Arterial Blood Gas interpretation
- ECG analysis
- Fluid and electrolyte considerations
- Tracheostomy management
- Non invasive ventilation

Discovery Program Outline

- 2 weeks orientation and supernumerary time.
- Paid Study days - lectures and clinical skills sessions.
- e-learning: on-line information and on-line worksheets to assist with learning and development.
- Frequent performance reviews and feedback.
- Certificate of completion at the end of the program.

Need more information?

Contact:

ICU Clinical Nurse Educators



(03) 8345 6729



WHS-ICUEducators@mh.org.au

Lennise Banner, NUM ICU Footscray – 8345 6069

Nicole Keogh, NUM ICU Sunshine - ??? nicole.keogh@wh.org.au

Applications for the ICU Discovery Program are made electronically at <http://westernhealth.mhr.com.au/>

The program is advertised in September / October each year.